



Enfield RoadWatch

We are fighting to save Enfield's Green Belt and to promote affordable homes on brownfield sites, where people need them most.

The revised local plan, released in December, is an even more targeted attack on the Green Belt. Read on to find out what you can do. Also, a new fundraiser to pay for the Whitewebbs judicial review is under way. Please help!



Dear Supporters,

You joined our mailing list because you care about the Green Belt. Enfield RoadWatch and our allies have been fighting for nearly ten years to save this precious resource for future generations. But, despite the protests and high volume of responses to many consultations, Enfield Council is determined to go its own way and remove protection from a large area of the borough's Green Belt so it can be

developed as housing and industrial sites. This includes the beautiful farmland of Vicarage Farm and all of Crews Hill, including the garden centres and golf course right up to the M25. Green Belt in Hadley Wood is also targeted as well as Holly Hill Farm where the Council proposes to build a logistics hub, while the former Whitewebbs Golf Course will become another football training camp.

These sites do not need to be lost. The Council is working against the wishes of the majority of residents, who do not want to build on the Green Belt when there are in fact alternatives that would be better for all Enfield's residents.

Below you will find a synopsis of the devastating plans for the Enfield Road corridor and for Crews Hill, some actions you can take immediately and how you can respond to the next official consultation, which will begin in early March.

Thank you for your continued support. Together we are stronger.



Whitewebbs fundraiser - please help

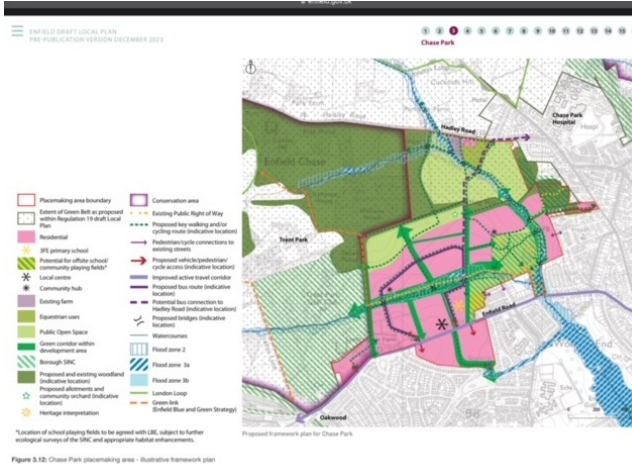
Round one of the campaign to preserve Whitewebbs Park as open space for the people of Enfield has been enormously successful. Grateful thanks to all the dedicated supporters who raised £18,000 for the initial legal action. Many of you will be aware that on November 1st, the High Court granted permission for a Judicial Review, acknowledging that "The Claimant has raised arguable grounds which merit consideration at a full hearing."

The hearing is scheduled for February 6th, 7th, and 8th, 2024, at the High Court.

Round two of the fundraising campaign is under way and this time a minimum of £12,000 must be raised for the complete Judicial Review hearing costs. No matter how small, every little bit helps. Thanks.

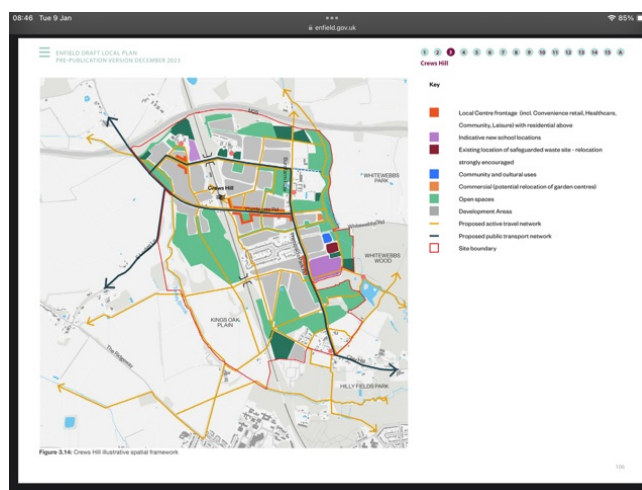
<https://www.crowdjustice.com/case/whitewebbs-park-help-fund-the/>

The Council's vision for Enfield Road



The name for this proposed development is Chase Park and it includes fields on both sides of Enfield Road. The Council's declared intention is to turn Enfield Road into an urban residential corridor, a 'high street'. Pink means residential development, becoming denser [maybe 5-6 storeys] as it gets closer to Enfield Road. You'll see there is also a proposed shopping parade along Enfield Road close to Jubilee Cottage and a couple of access roads going into the development off Enfield Road. Also a new primary school. The fact is that building on the Green Belt is NOT necessary. And this particular area of Green Belt is too important to lose. **We'll provide guidance on sending objections when the consultation begins in early March.** The details for Chase Park and Crews Hill can be read at https://www.enfield.gov.uk/_data/assets/pdf_file/0020/49214/5-Ch-3-Place-Part4-Planning.pdf

The Council's vision for Crews Hill



When it comes to Crews Hill, the Council is carving a large swathe out of the middle of the Green Belt, including all the garden centres and the golf course to create a 'distinctive and sustainable' new neighbourhood. They promise 3,500 new homes in the plan period and a further 2,000 after 2041. We sometimes wonder if any of the planners have ever been to Crews Hill! It provides lots of varied jobs, draws in visitors from near and far and is a unique area in many ways. There is no need to lose it. **We'll provide guidance on sending objections when the consultation begins in early March.** The details for Chase Park and Crews Hill can be read at https://www.enfield.gov.uk/_data/assets/pdf_file/0020/49214/5-Ch-3-Place-Part4-Planning.pdf

How you can help now

There will be a London Mayoral election on May 2 this year. The London Plan, which sits as policy between Enfield's plan and the National Planning Policy Framework [NPPF], is critical to the success or failure of the council's plan. Currently they are not in compliance with the London Plan and the present Mayor, Sadiq Khan, has consistently objected to the proposed loss of Green Belt. We understand he is standing firm on that, but it would be a good idea to write to all the Mayoral candidates and to the candidates vying to be Enfield's Greater London Authority [GLA] representative asking for a firm commitment that they will a) object to Enfield's proposals for Chase Park and Crews Hill during the upcoming Regulation 19 consultation and b) if elected use their powers to block the developments. We are providing their email addresses below:

Mayoral candidates
 Sadiq Khan [Labour] mayor@london.gov.uk
 Susan Hall [Conservative] susan.hall@london.gov.uk
 Rob Blackie [Lib Dem] rob@robblackie.com
 Zoe Garbett [Green] Zoe.garbett@hackney.gov.uk

GLA candidates

[Labour - incumbent] Joanne.McCartney@london.gov.uk
[Conservative] Calum McGillivray office@enfieldnorth.org
[Lib Dem] Guy Russo guy.russo@enfieldlibdems.org.uk
[Green] Katie Knight contact@enfieldgreens.org.uk

Other useful information

The [Enfield Society](#) website has more details about the policies, maps of the Green Belt sites under threat and a section on the history of Enfield Chase.



We'll be emailing you more frequently over the next few weeks with information about the consultation and ways you can help. Please bear with us. It's important.

This is the most critical time for our campaign, so please read - and share - our messages. And make your neighbours aware.

Here are other ways you can help:

1. Like our Instagram, Facebook and Twitter feeds and share them with **everyone**.
2. We are particularly keen to reach young people [whose future will be greatly impacted by all of this] and people in the east of borough who may not have the same natural affinity to the Green Belt. Please send us your ideas.
3. If you live in a Ward with a Labour councillor, don't let up on them. Email and call and let them know repeatedly that this plan is not good for Enfield's residents and that there are better alternatives. Urge them to vote **NO** at the full council meeting on March 6th.
4. Make a contribution. We need to pay for expert advice, printing leaflets and much more. [Here's how](#).
5. Volunteer your professional skills to the campaign.

The online petition is still going up steadily. We are now over 38,490. You are not alone in wanting to stop the destruction of our Green Belt. If you haven't signed yet, please visit this [link](#) and share it with your friends and family too.

Together we are stronger. Thanks for your continued support.

Links to some of our partner organisations:

[The Enfield Society](#)
[CPRE-London](#)
[Enfield Climate Action Forum](#)
[London Green Belt Council](#)
[Better Homes Enfield](#)

Please stay in touch via our social media [buttons below] and keep up to date via our website. www.enfieldroadwatch.co.uk. If you haven't already signed, please join the thousands of people who have signed our [Change.org](#) petition. Go to: [Change.org](#) [then search for Protect Enfield]

Thanks for your continued support.



Enfield RoadWatch
info@enfieldroadwatch.co.uk



This email was sent to {{ contact.EMAIL }} You received this email because you are registered with Enfield RoadWatch

[Unsubscribe here](#)

