



Enfield RoadWatch

Enfield RoadWatch December 2020 Newsletter

Dear Supporters,

We hope you are keeping safe and well and that you will be able to enjoy time with family and friends - as much as is allowed - during the festive season. Thanks to everyone who submitted a response to the Strategic Housing Land Availability [SHLAA] methodology consultation. There is a brief update below. Another important consultation - on Enfield's Blue & Green Strategy - is running until January 11 and we hope you will take the time to respond to that too. Enfield RoadWatch continues to work hard to protect the Green Belt and green open spaces in collaboration with several local and national organisations and groups. As always, thanks for your continued support and best wishes for the holiday season.

Let's Talk: Enfield Blue and Green Strategy



Blue & Green Strategy Consultation

An important Local Plan revision consultation is running **until January 11**. This one would establish a strategy for managing the borough's public blue and green assets, including parks and open spaces, rivers, streams, trees and much more. It is ambitious with some worthy goals but, as with all Council documents, the devil is in the detail and what is missing. In particular:

- There is no vision for Crews Hill, which is barely mentioned in any of the documents - a cause for great concern that the Council has other plans for the area.
- Local food production and agriculture in general are not adequately explored, which are missed opportunities.
- Funding relies a lot on developer fees. Will Green Belt and other green spaces be developed to generate the necessary funds?
- 'No net loss' of green space could mean Green Belt swaps to increase green space in the east of the borough.

Enfield RoadWatch has submitted a response to the consultation by completing the survey and by also sending a much longer critique by email. You can read our survey response and our longer critique on the website [here](#).

Please submit your own response. The easiest way is to complete the survey form, respond neutrally and refer them to the full Enfield RoadWatch response - but please use our information however you feel appropriate. The survey can be accessed via the green button below.

The deadline is Monday January 11.

Please get in touch if you have any questions.

[Consultation link](#)

The London Strategic Housing Land Availability Assessment 2017

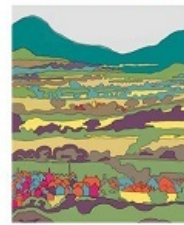
Part of the London Plan evidence base

SHLAA methodology update

Enfield RoadWatch asked the Mayor of London and the Council about the need for an Enfield SHLAA. The Mayor's office responded: *Most boroughs do not do a SHLAA because the Mayor already does this for the whole of London.... The Mayor has made clear in his draft London Plan that protections for Green Belt and Metropolitan Open Land (MOL) should be maintained so we would expect Enfield to exclude protected open space/green infrastructure as part of their criteria for identifying potential housing land.* Enfield council responded that the London SHLAA was inadequate and inaccurate and they see a need for a *locally specific approach.* We have considerable concerns about the proposed methodology especially now that the new housing algorithm has been abandoned by the Government. We will watch this closely. Our consultation response is on the website [here](#).

REPURPOSING THE GREEN BELT IN THE 21ST CENTURY

Peter Bishop, Alana Martinez Perez, Rob Roggevoos and Lesley Williams



UCLPRESS

New text book features Enfield RoadWatch

Repurposing the Green Belt in the 21st Century is a new academic text. We are proud to say that our survey of Enfield's previously-developed/brownfield sites, was used as source material for the project. [Space to Build Enfield](#) was a collaboration between Enfield RoadWatch, The Enfield Society and CPRE-London. The new book can be downloaded as a freePDF [here](#).

News Round Up

Enfield Chase Restoration

Planting thousands of trees and re-wilding in the north-west of the borough are an important part of the Blue and Green Strategy referenced above. Despite some of our criticisms of the overall strategy, the Chase Restoration is an exciting project that will transform that part of Enfield. You can read more about it [here](#).

Arnold House

The former Arnold House care home at 66 The Ridgeway is currently for sale. The site, which backs onto the Green Belt, is being marketed by Cluttons for residential development. The sales brochure includes the following *The greenfield land offers future residential redevelopment potential, subject to successful negotiation of the local development plan public consultation process, due to re-commence in early 2021.* This is exactly the type of nibbling away at the Green Belt that we must resist.

Royal Chace Hotel redevelopment

The hotel has closed and the site is being redeveloped for a care facility and new homes by Signature Senior Lifestyle and Bellway Homes. Although not a Green Belt site, it is surrounded on three sides by the Green Belt so it will be important to monitor the proposed density, height and appearance of the project.

Bell Lane Playing Fields

The Council has voted to build a Special Educational Needs school on the Bell Lane Playing fields, saying it is the "only available and suitable site for the proposed development". You can read more [here](#).

Enfield Town Redevelopment

DWS (Deutsche Bank), which owns Palace Gardens and Palace Exchange shopping centres in The Town, is proposing an extensive redevelopment of the site into a retail/ leisure/ residential area. While many of the proposals are welcomed, the inclusion of six tower blocks, from 12 to 26 storeys high, is not. The central tower would dwarf the Civic Centre and Tower Point, the other high rise buildings in town. The Enfield Society is working with Civic Voice, the national charity which engages people with planning issues, to gauge the community's response to these plans. An independent survey will be launched soon. The Enfield Society hopes you will support this campaign to retain Enfield's heritage. They particularly need confident social media communicators, and volunteers to distribute the survey in the town centre. Please send offers of help to palsq-help@enfieldsociety.org.uk.

Links to some of our partner organisations:

Please stay in touch via our social media [buttons below] and keep up to date via our website. www.enfieldroadwatch.co.uk. If you haven't already signed, please join the thousands of people who have signed our [Change.org](#) petition. Go to: [Change.org](#) [then search for Protect Enfield]

Thanks for your continued support.



Enfield RoadWatch
enfieldroadwatch@gmail.com



This email was sent to {{ contact.EMAIL }}
You received this email because you are registered with Enfield RoadWatch

[Unsubscribe here](#)

